



Beam Universal USB Driver Installation Guide



Suitable for all USB enabled Beam Devices

Beam Universal USB Driver Installation Guide

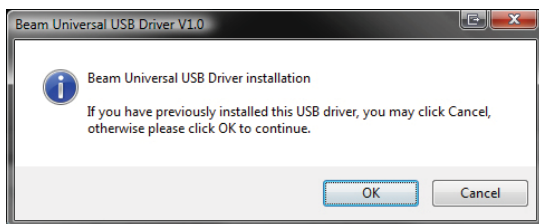
Step 1.

Run setup.exe located in the ZIP file containing the Universtal USB Driver.

You will be prompted throughout the installation. Please read all messages thoroughly.

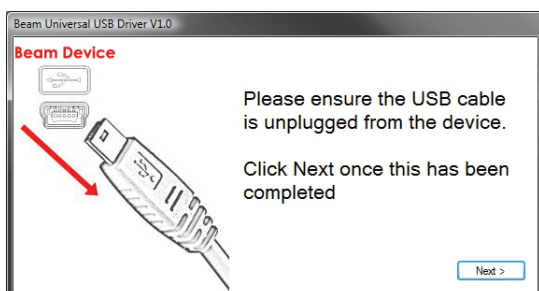
Step 2.

If you already have installed this driver previously as part of another Beam product you can cancel the installation otherwise click on OK.



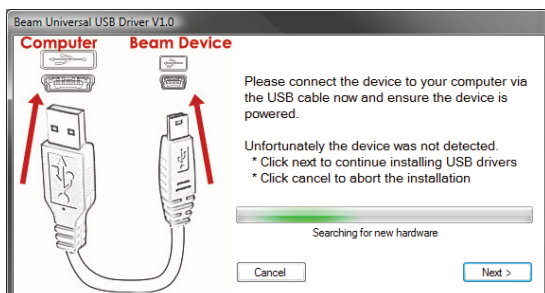
Step 3.

Make sure your device is not connected to the PC via it's USB cable during this installation until prompted to do so. Click Next > when connected.



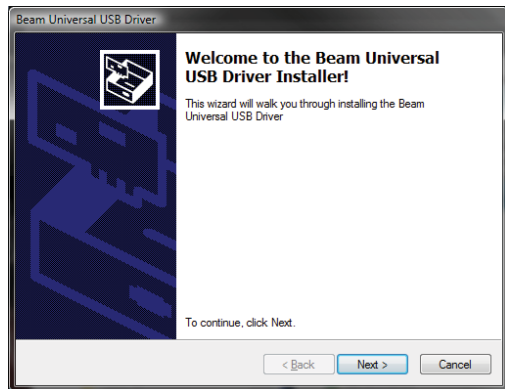
Step 4.

When Prompted please connect the USB cable to the PC. If you do not have the device to connect and only wish to install the drivers in advance please wait until the installation program finishes trying to detect a device and click on Next >.



Step 5.

Once the connection is made you will be prompted to continue through to the actual driver installation. Click Next >.



Follow the installation steps until you reach step 6.

Step 6.

Once the driver is fully installed you will be advised that it's ready to use and your installation is complete. You may now connect your Beam device to your PC.

