



IsatDock Firmware Upgrade Guide

Configuration Manual

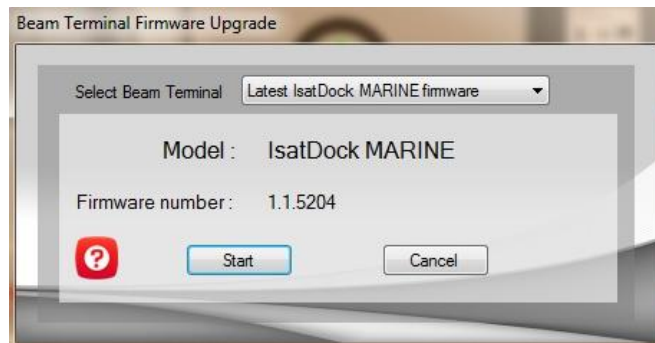
Upgrading Firmware using FALCON

Double Click on the Falcon Tool to start upgrading your IsatDOCK. The following image should appear

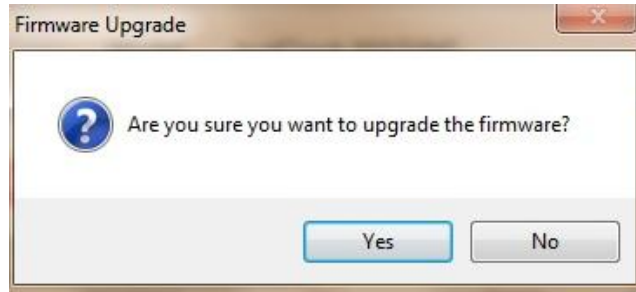


After you have opened up *ADVANCED OPTIONS* select *UPGRADE FIRMWARE*.

You will then be automatically given the option to upgrade the firmware of the Docking Station



The software will then prompt you to confirm the upgrade.

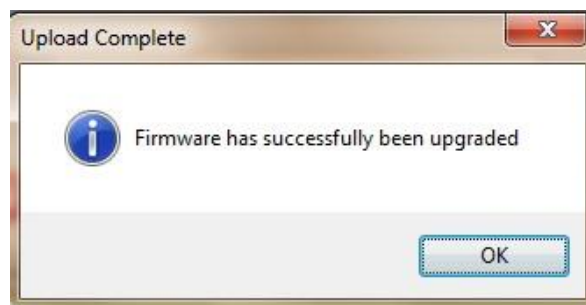


Click on **YES** and Enter

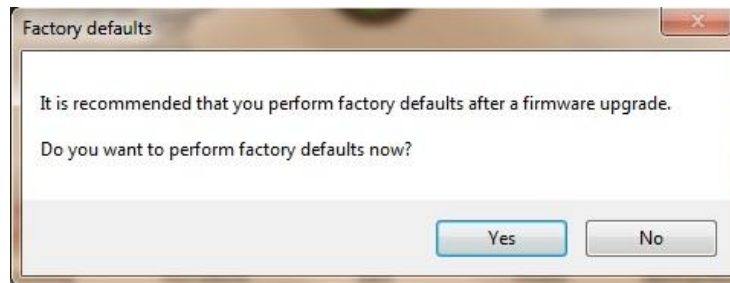
The following image should then appear



When this message appears you will get quite a number of beeps through the IsatDOCK, this is normal procedure. Once it has gone through its rebooting process the following image will appear.



You will then be prompted with the following message:



At this prompt, please select *YES*

You will notice a timer appear on your screen while it restores to Factory Default. It will then prompt you with a message advising *FACTORY DEFAULTS SET*.



Click *OK*. It then automatically disconnects the software. If you need to reconnect again to see the firmware version simply click on connect again.

The Upgrade has now been successfully completed.